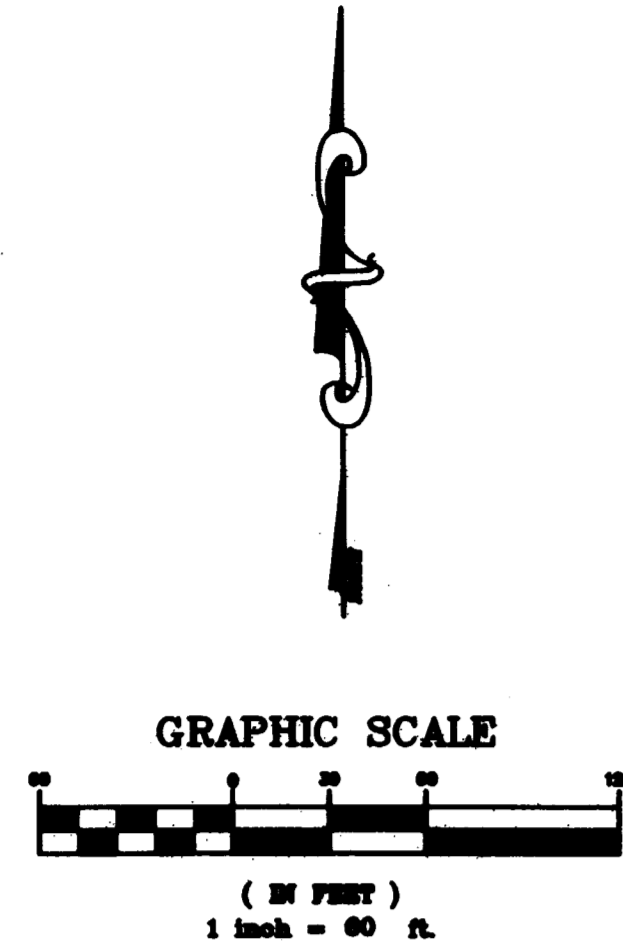


**JENSEN BEACH COUNTRY CLUB PLAT NO. 10  
OF WEST JENSEN, A P.U.D. / D.R.I.  
A REPLAT OF A PORTION OF PLAT NO. 1 ST. LUCIE GARDENS, SECTION 18, AS RECORDED IN PLAT  
BOOK 1, PAGE 35, PUBLIC RECORDS OF ST. LUCIE (NOW MARTIN) COUNTY, FLORIDA  
LYING IN SECTION 18, TOWNSHIP 37 SOUTH, RANGE 41 EAST, MARTIN COUNTY, FLORIDA**

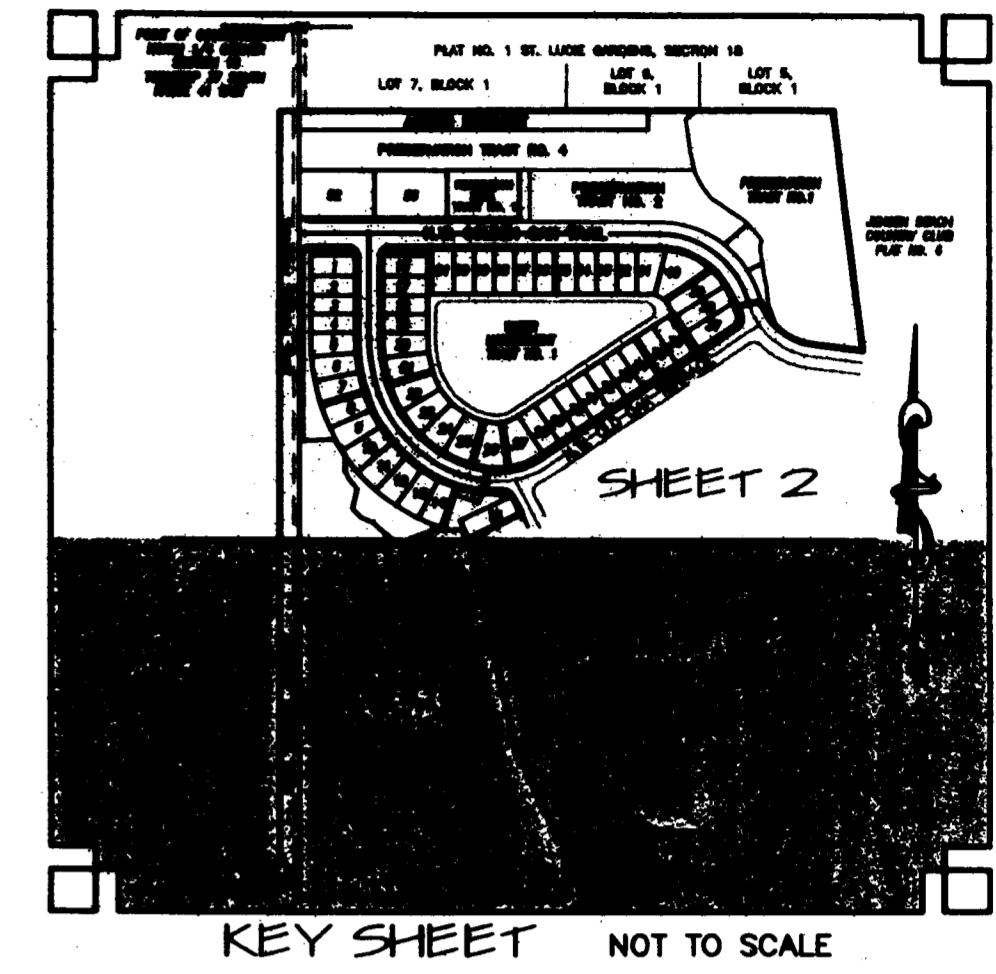
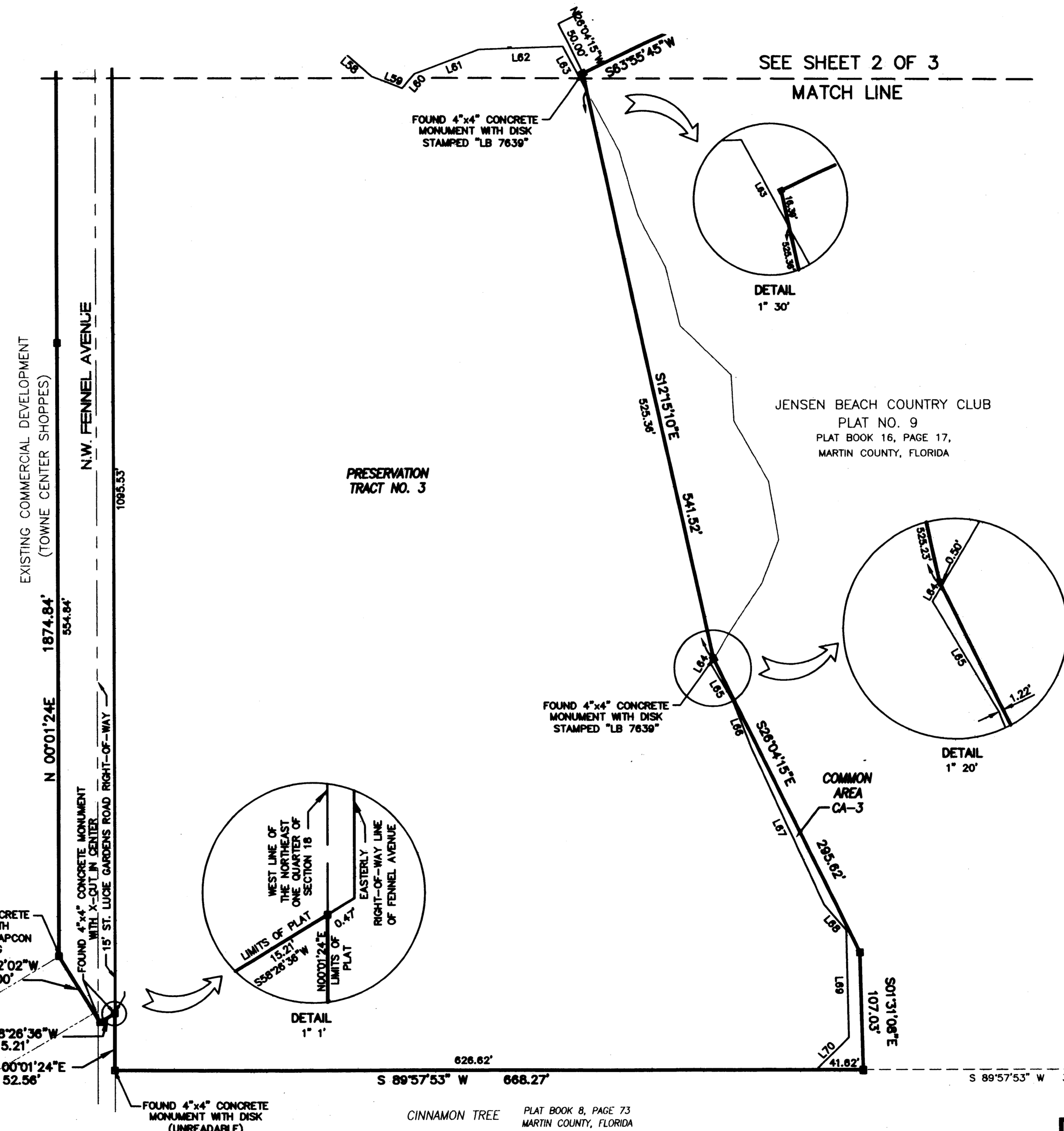


**LEGEND**

P.R.M.	PERMANENT REFERENCE MONUMENT
P.C.P.	PERMANENT CONTROL POINT
LB	LICENSED BUSINESS
CL	CENTER LINE
R	RADIUS
Δ	CENTRAL ANGLE
L	ARC LENGTH
CB	CHORD BEARING
CH	CHORD DISTANCE
(R)	RADIAL
(NR)	NON-RADIAL
U.E.	UTILITY EASEMENT
D.E.	DRAINAGE EASEMENT
■	SET PERMANENT REFERENCE MONUMENT 4"x4" CONCRETE MONUMENT WITH DISK STAMPED "PRM-LB 6705"
□	FOUND CONCRETE MONUMENT- SIZE AND IDENTIFICATION AS NOTED
●	PERMANENT CONTROL POINT PK NAIL AND DISK STAMPED "PCP LB #6705"
○	5/8" IRON ROD WITH CAP STAMPED "LB6705"
⊠	UTILITY EASEMENT AS PER OFFICIAL RECORDS BOOK 2057, PAGE 2295

**SURVEYOR'S NOTES:**

- THIS PLAT, AS RECORDED IN ITS ORIGINAL FORM IN THE PUBLIC RECORDS IS THE OFFICIAL DEPICTION OF THE SUBDIVIDED LANDS DESCRIBED HEREON AND WILL IN NO CIRCUMSTANCES BE SUPERANATED IN AUTHORITY BY ANY OTHER FORM OF THE PLAT, WHETHER GRAPHIC OR DIGITAL.
- THERE MAY BE ADDITIONAL RESTRICTIONS THAT ARE NOT RECORDED ON THIS PLAT THAT MAY BE FOUND IN THE PUBLIC RECORDS OF THIS COUNTY.
- IN THE EVENT THAT MARTIN COUNTY DISTURBS THE SURFACE OF A PRIVATE STREET DUE TO MAINTENANCE, REPAIR OR REPLACEMENT OF A PUBLIC IMPROVEMENT LOCATED THEREIN, THEN THE COUNTY SHALL BE RESPONSIBLE FOR RESTORING THE STREET SURFACE ONLY TO THE EXTENT WHICH WOULD BE REQUIRED IF THE STREET WERE A PUBLIC STREET, IN ACCORDANCE WITH COUNTY SPECIFICATIONS.
- BEARINGS ARE BASED ON THE NORTH LINE OF THE NORTHEAST ONE QUARTER (1/4) OF SECTION 18, TOWNSHIP 37 SOUTH, RANGE 41 EAST, MARTIN COUNTY, FLORIDA, AS CALCULATED BASED ON STATE PLANE COORDINATE VALUES FOR THE SECTION CORNER AT THE NORTHEAST CORNER OF SECTION 18, TOWNSHIP 37 SOUTH, RANGE 41 EAST AND THE NORTH (1/4) CORNER OF SECTION 18, TOWNSHIP 37 SOUTH, RANGE 41 EAST. SAID LINE BEARS NORTH 88°42'24" EAST (STATE PLANE COORDINATE VALUES ARE REFERENCED TO THE NAD83 STATE PLANE COORDINATE SYSTEM, FLORIDA EAST ZONE 0901 AND ARE IN UNITS OF U.S. SURVEY FEET).
- WHERE DRAINAGE AND UTILITY EASEMENTS CROSS, DRAINAGE EASEMENTS SHALL TAKE PRECEDENCE.
- THERE SHALL BE NO BUILDING OR ANY KIND OF CONSTRUCTION OR TREES OR SHRUBS PLACED ON DRAINAGE EASEMENTS.
- THERE SHALL BE NO BUILDING OR ANY PERMANENT STRUCTURES PLACED ON UTILITY EASEMENTS.
- THE LANDS BOUND BY THIS SURVEY ARE LOCATED IN FLOOD ZONE "AH" (FLOOD DEPTHS OF 1 TO 3 FEET) AND FLOOD ZONE "X" (AREAS DETERMINED TO BE OUTSIDE THE 500-YEAR FLOOD PLAIN) PER F.I.R.M. FLOOD INSURANCE RATE MAP NUMBER 12085C0020F, DATED OCTOBER 4, 2002.



**PRESERVATION AREA LINE TABLE**

LINE	BEARING	LENGTH
L1	S50°43'00"W	38.10
L2	S07°44'47"E	86.04
L3	S14°48'44"E	52.08
L4	S28°50'20"E	38.20
L5	S38°20'54"E	36.60
L6	S68°24'51"E	57.27
L7	S68°08'56"E	43.55
L8	S42°38'07"E	42.31
L9	S35°58'40"E	19.24
L10	S10°07'00"W	20.80
L11	S09°20'19"E	57.78
L12	S10°14'23"E	39.86
L13	S08°58'48"E	48.23
L14	S17°38'38"E	58.07
L15	S35°39'58"E	4.18
L50	S87°58'31"W	88.90
L51	S32°35'34"E	51.10
L52	S00°48'54"W	33.81
L53	S28°55'11"E	22.94
L54	S38°16'31"E	30.96
L55	S11°43'33"W	53.31
L56	S43°16'25"E	30.57
L57	S85°42'05"E	32.66
L58	S48°38'17"E	65.04
L59	S88°39'38"E	29.04
L60	S40°25'23"W	17.01
L61	S89°13'40"W	61.16
L62	S87°42'15"W	75.12
L63	S28°21'05"E	45.17
L64	S30°00'17"W	5.23
L65	S30°42'21"E	36.50
L66	S20°45'01"E	44.80
L67	S24°28'48"E	187.13
L68	S40°58'42"E	29.85
L69	S01°11'14"E	96.98
L70	S43°42'28"E	41.55

**CREECH ENGINEERS, INC.**  
CIVILIZATION ENGINEERS  
2000 N.E. JENSEN BEACH BLVD., FLORIDA 34967 (772) 283-1413  
4450 WEST EAU GALLE BLVD., MELBOURNE, FL 32934 (321) 255-5434  
707 EAST PARK AVENUE, TALLAHASSEE, FL 32301 (860) 841-1705